

CLOSURE DRAWINGS

FOR

GEORGIA POWER

PLANT YATES

INACTIVE CCR LANDFILL - GYPSUM STACK

COWETA COUNTY, GEORGIA

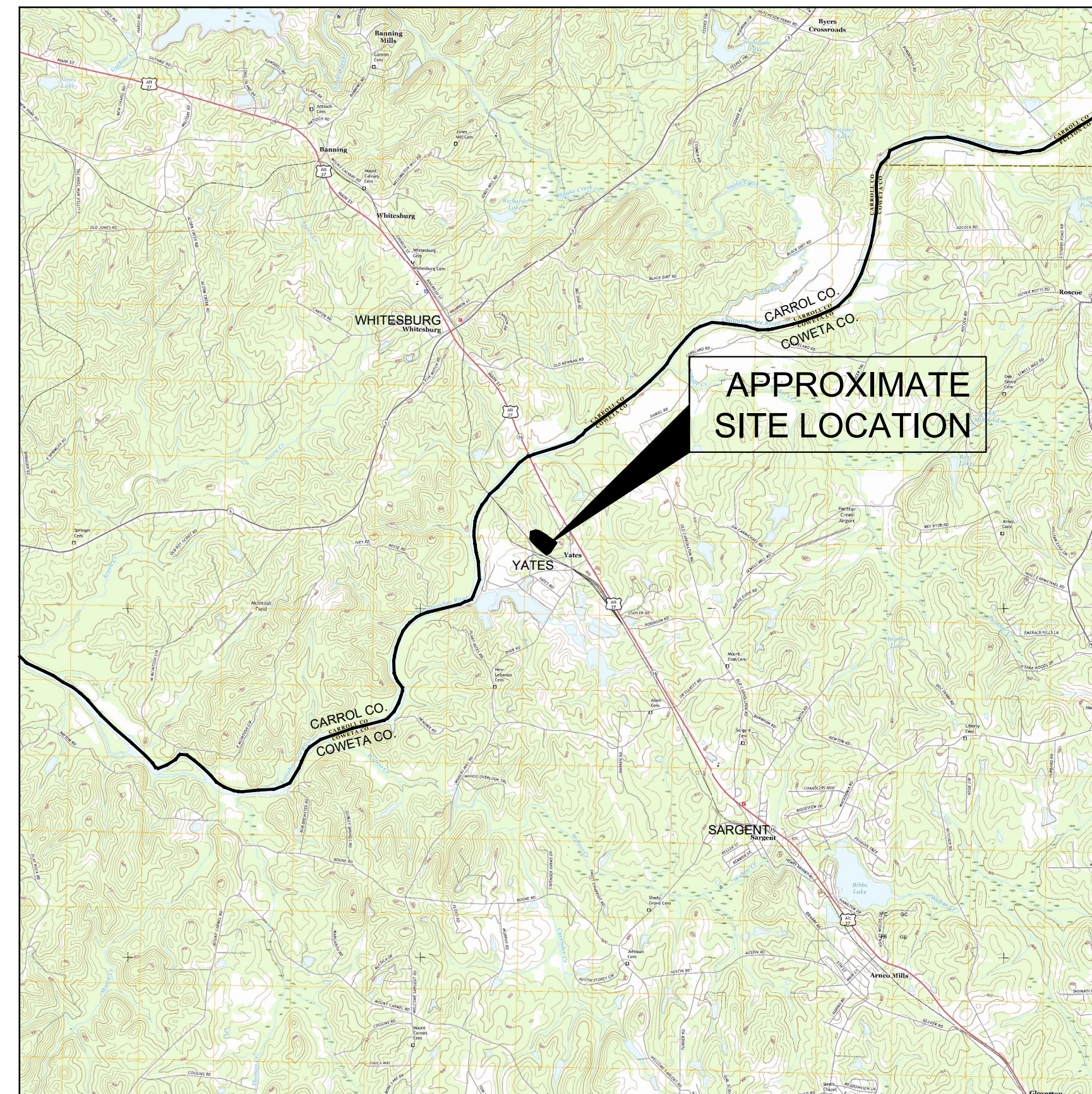
SEPTEMBER 2021

PREPARED FOR:

GEORGIA POWER COMPANY
 241 RALPH MCGILL BLVD, NE
 ATLANTA, GA 30308
 TELEPHONE: (404) 506-6505

SITE ADDRESS

PLANT YATES
 708 DYER ROAD
 NEWNAN, GA30263
 (770) 252-0650



PROJECT SITE LOCATION
 SCALE: 1" = 1 MILE
 SOURCES: USGS QUAD MAP DATED 2017 WHITESBURG, GA
 USGS QUAD MAP DATED 2017 NEWNAN NORTH, GA
 USGS QUAD MAP DATED 2017 HULETT, GA
 USGS QUAD MAP DATED 2017 RICO, GA

REVISION HISTORY

DATE	SHEETS	REQUESTED BY

INDEX OF DRAWINGS

SHEET NO.	DESCRIPTION
1	COVER
2	PROPERTY BOUNDARY & INDEX
3	PERMIT BOUNDARY & LEGAL DESCRIPTION
4	PRE CLOSURE EXISTING CONDITIONS
5	CLOSURE FINAL GRADE SURVEY



Atlantic Coast Consulting, Inc.
 1150 Northmeadow Parkway, Suite 100, Roswell, GA 30076
 770-594-5998



Georgia
 Power



SOURCE: BING MAP 2018
SCALE: 1" = 1000'



LEGEND		
EXISTING	NEW	DESCRIPTION
		APPROXIMATE PROPERTY BOUNDARY
		CCR PERMIT BOUNDARY
		10' CONTOUR
		2' CONTOUR
		PAVED ROAD
		TREELINE
		RAILROAD
		GROUNDWATER MONITORING WELL
		PIEZOMETER
		OVERHEAD POWER LINE
		POWER POLE
		TRANSMISSION LINE TOWER
		PERMANENT IDENTIFICATION MARKER

- GENERAL NOTES:**
- EXISTING PLANT YATES AERIAL TOPOGRAPHY PROVIDED BY GEORGIA POWER DATED MAY 26, 2017.
 - PROPERTY BOUNDARY SHOWN PROVIDED BY SOUTHERN COMPANY SERVICES IN ELECTRONIC FORMAT AND IS APPROXIMATE.

P:\Industrial\054-Southern Company\107-Plant Yates CCR Permit\054-107-002 (Index)\Dwg 10/26/21 BETH HEARDEN



PROPERTY BOUNDARY & INDEX			
CLOSURE DRAWINGS			
FOR GEORGIA POWER PLANT YATES INACTIVE CCR LANDFILL - GYPSUM STACK COWETA COUNTY, GEORGIA			
		1150 Northmeadow Parkway Suite 100 Roswell, GA 30076	
PROJ. NO.	I054-107-GYP	DWG.	EDIT 09/30/2021
SCALE	1" = 1,000'	SHEET 2 OF 5	
		SEPTEMBER 2021	

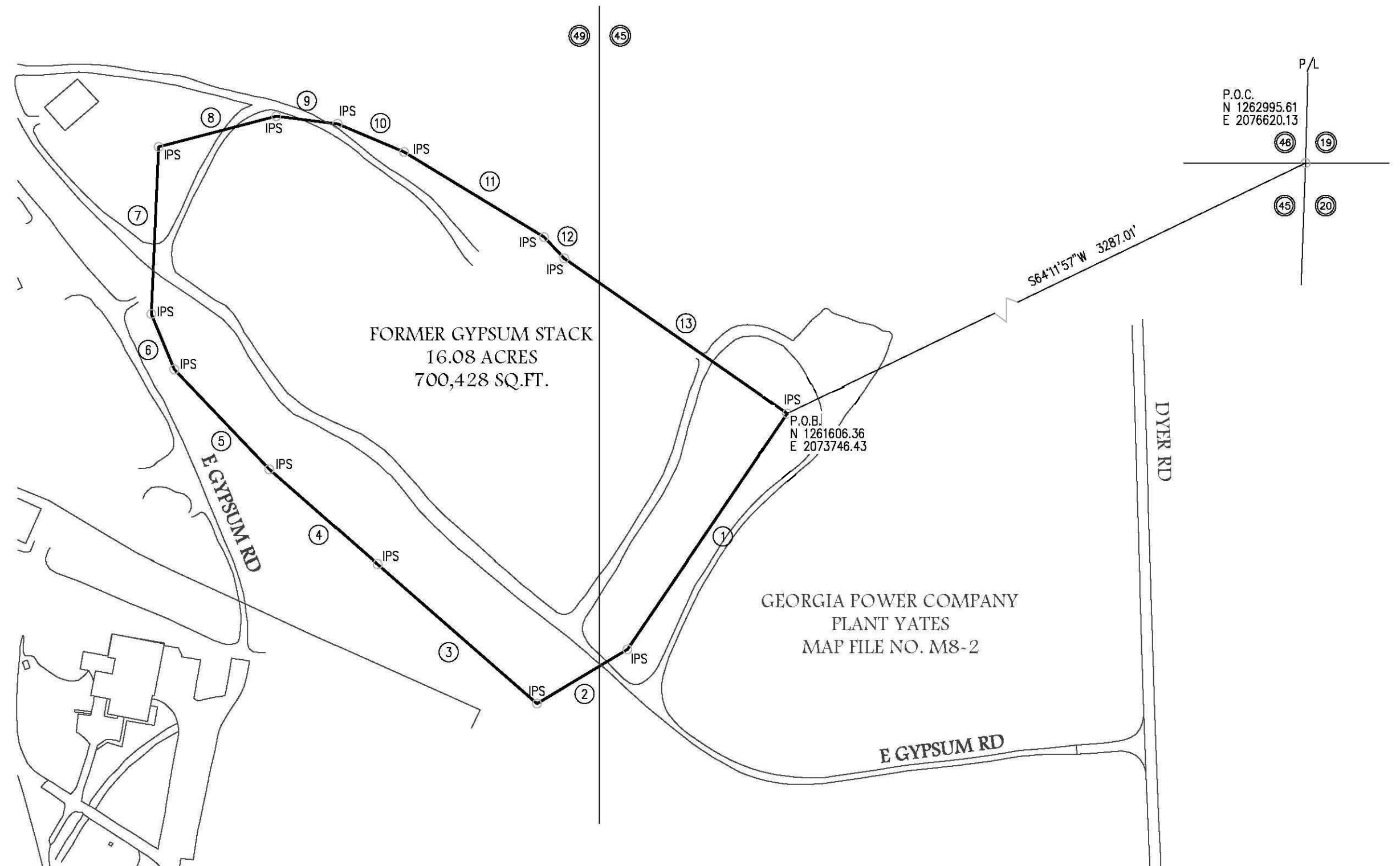
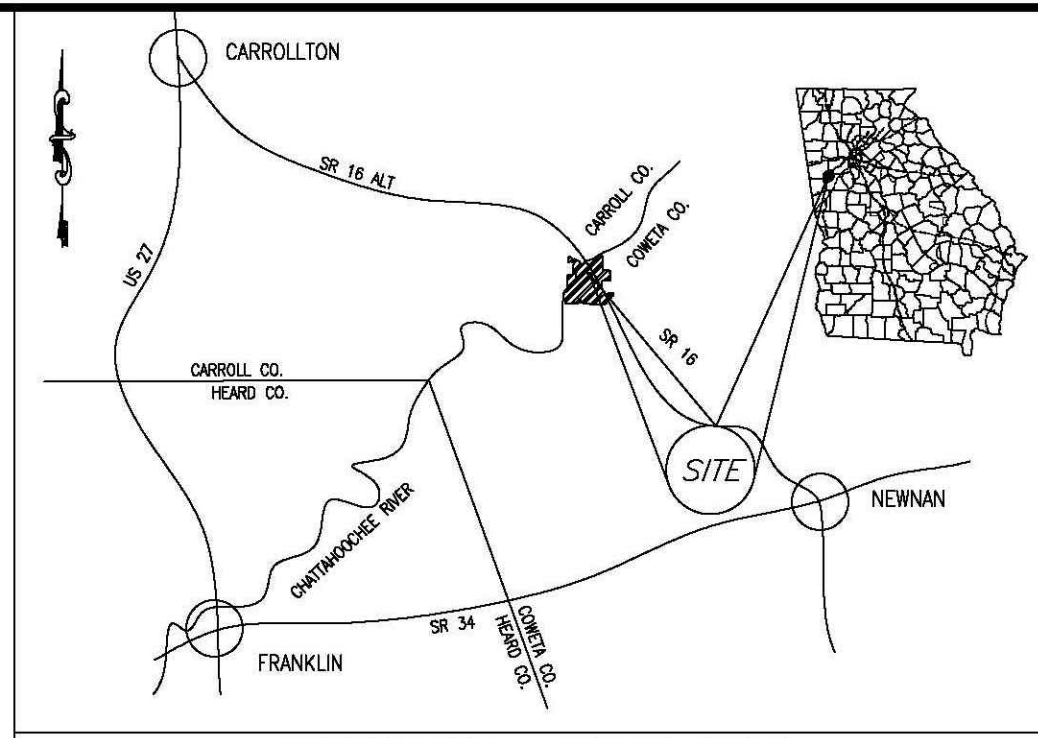
NORTH ARROW & PLAT BEARINGS
BASED ON THE STATE PLANE
MANSUBM EAST WEST
(SEE TABLE)

Plant Yates Former Gypsum Stack Call Table

Course	Bearing	Distance
1	S 34°10'04" W	520.05'
2	S 58°59'28" W	192.89'
3	N 48°48'27" W	386.90'
4	N 48°45'51" W	262.20'
5	N 43°31'32" W	251.92'
6	N 22°29'56" W	109.76'
7	N 02°30'36" E	305.77'
8	N 75°20'45" E	222.03'
9	S 82°43'33" E	112.32'
10	S 67°07'52" E	131.69'
11	S 58°38'46" E	299.59'
12	S 43°37'44" E	53.46'
13	S 55°08'49" E	496.59'

UTILITY LEGEND

- ⊕ Electric Manhole
- ⊖ Electric Meter
- ⊕ Gas Manhole
- ⊕ Gas Valve
- ⊕ Gas Meter
- ⊕ Sanitary Sewer Manhole
- ⊕ Sanitary Sewer Cleanout
- ⊕ Storm Sewer Manhole
- ⊕ Telephone Manhole
- ⊕ Water Manhole
- ⊕ Water Valve
- ⊕ Water Meter
- ⊕ Fire Hydrant
- ⊕ Well
- ⊕ Power Pole
- ⊕ Transmission Tower
- ⊕ Guy Wire



Plant Yates - Former Gypsum Stack
All that parcel or tract of land lying and being in land lots 45 and 49 of the 4th District, Coweta County, Georgia and being more particularly described as follows:

Commencing at the common corner of Land Lots 46, 19, 20, and 45; Thence running S 64°11'57" W a distance of 3,287 feet, more or less, to an Iron Pin set at the Georgia State Plane, West Zone, NAD83 coordinates of: N 1261806.38 and E 2073746.43; Thence running South 34 degrees 10 minutes 04 seconds West a distance of 520.05 feet to a point; Thence running South 58 degrees 59 minutes 28 seconds West a distance of 192.89 feet to a point; Thence running North 48 degrees 48 minutes 27 seconds West a distance of 386.90 feet to a point; Thence running North 48 degrees 45 minutes 51 seconds West a distance of 262.20 feet to a point; Thence running North 43 degrees 31 minutes 32 seconds West a distance of 251.92 feet to a point; Thence running North 22 degrees 29 minutes 56 seconds West a distance of 109.76 feet to a point; Thence running North 02 degrees 30 minutes 36 seconds East a distance of 305.77 feet to a point; Thence running North 75 degrees 20 minutes 45 seconds East a distance of 222.03 feet to a point; Thence running South 82 degrees 45 minutes 33 seconds East a distance of 112.32 feet to a point; Thence running South 67 degrees 07 minutes 52 seconds East a distance of 131.69 feet to a point; Thence running South 58 degrees 38 minutes 46 seconds East a distance of 299.59 feet to a point; Thence running South 43 degrees 37 minutes 44 seconds East a distance of 53.46 feet to a point; Thence running South 55 degrees 08 minutes 49 seconds East a distance of 496.59 feet to a point and the Point of Beginning;

Said tract contains 16.08 acres (700,428 square feet).

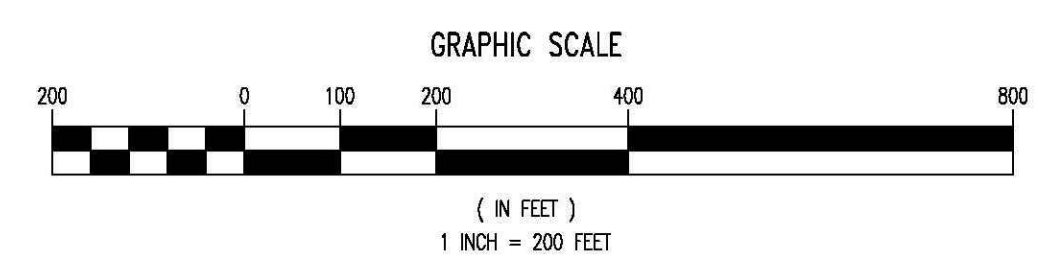
NOTE: ALL IPS ARE 1/2" REBAR WITH CAPS.

PLAT ABBREVIATIONS

- IPF - Iron Pin Found
- IPS - Iron Pin Set
- FPS - Fence Post Set
- OTF - Open Top Pipe
- CIP - Crimp Top Pipe
- Conc. - Concrete
- Alumin. - Aluminum
- P/L - Property Line
- R/W - Right of Way
- C/L - Centerline
- F/L - Fenceline
- T/L - Transmission Line
- N/F - New or Formerly
- DB - Deed Book
- PB - Plat Book
- MF - Map File No.
- N.T.S. - Not to Scale
- P.O.C. - Point of Commencement
- P.O.B. - Point of Beginning
- ⊕ - Geotechnical Bore Hole
- ⊕ - Underground Power
- ⊕ - Overhead Utilities
- ⊕ - Georgia Power Company

MONUMENTATION LEGEND

- ⊕ Iron Pin Set
- ⊕ Iron Pin Found
- ⊕ Monument Set
- ⊕ Monument Found
- ⊕ Computed Point
- ⊕ Control or Traverse Point
- ⊕ Geodetic Control Point
- ⊕ Benchmark or Temporary Benchmark (TBM)



SURVEY CLOSURE STATEMENT
The Field Data upon which this plat is based has a closure precision of one foot in 58,769 feet, and an angular error of <1" per angle point, and was adjusted using Least Squares method.
This plat has been calculated for closure and is found to be accurate within one foot in 378,935 feet.
Linear Measurement obtained using Leica TS-15 & Angular Measurement obtained using Trimble SPS730
Field Work completed 11/29/2017

NOTE: BACKGROUND IMPROVEMENTS PER CONTIGUOUS PLAT HAMMOND BY LOWE ENGINEERS, LLC, DATED AUGUST 15, 2018
F.I.R.M. FLOOD NOTE: THIS PROPERTY IS LOCATED IN A 100 YR. F.I.R.M. FLOODPLAIN, (BY GRAPHIC PLOTTING ONLY) ACCORDING TO F.I.R.M. FLOOD MAP OF FLOYD COUNTY, GA. COMMUNITY-PANEL NO. 13115C0163 E, 13115C0164 E & 13115C0251 E, DATED SEPTEMBER 25, 2009.

NOTE: BACKGROUND IMPROVEMENTS PER YATES CCR BOUNDARIES DRAWING PROVIDED BY GPC, DATED SEPTEMBER 4, 2018
REFERENCES:
1. GPC DRAWING 2018-9-4 YATES CCR BOUNDARIES
2. PROPOSED CCR PERMIT BOUNDARIES BY ATLANTIC COAST CONSULTING, DATED AUGUST 2018.

SURVEYOR: WILLIAM J. DANIEL III
P.L.S. #2257
LOWE ENGINEERS, LLC
990 HAMMOND DRIVE, SUITE 900
ATLANTA, GA 30328
PHONE (770) 857-8400
I hereby certify that this survey has been prepared in conformity with the Technical Standards for Property Surveys in Georgia as set forth in Chapter 180-7 on the Rules of the Georgia Board of Registration for Professional Engineers and Land Surveyors and as set forth in the Georgia Plat Act O.C.G.A. 15-6-67.
And further certify that according to Georgia Code Section 15-6-67(d), this plat is not required to be reviewed by any local governing authorities prior to recording. Per said section, "No approval shall be required if no new streets or roads are created or no new utility improvements are required or no new sanitary sewer or approval of a septic tank is required." No such improvements are required hereon.
Date: March 20, 2020

GEORGIA POWER CO., ATLANTA, GA.
Land Department
Plant Yates - Former Gypsum Stack
Permitted Site Boundary

LAND LOTS 45 & 49, 4TH DISTRICT, COWETA COUNTY, GEORGIA

DR.	DE	TR.	Checked
			WJD/III
SCALE		DATE	
1" = 200'		3.20.2020	
DRAWING NUMBER			
P469-8(5)			



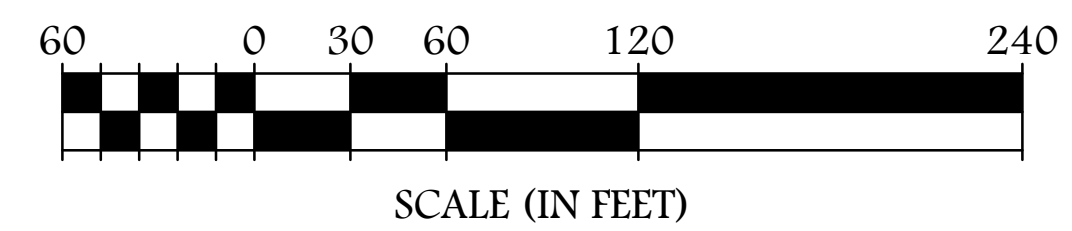
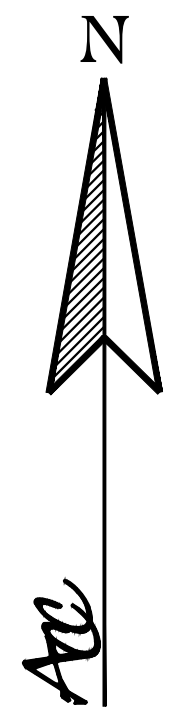
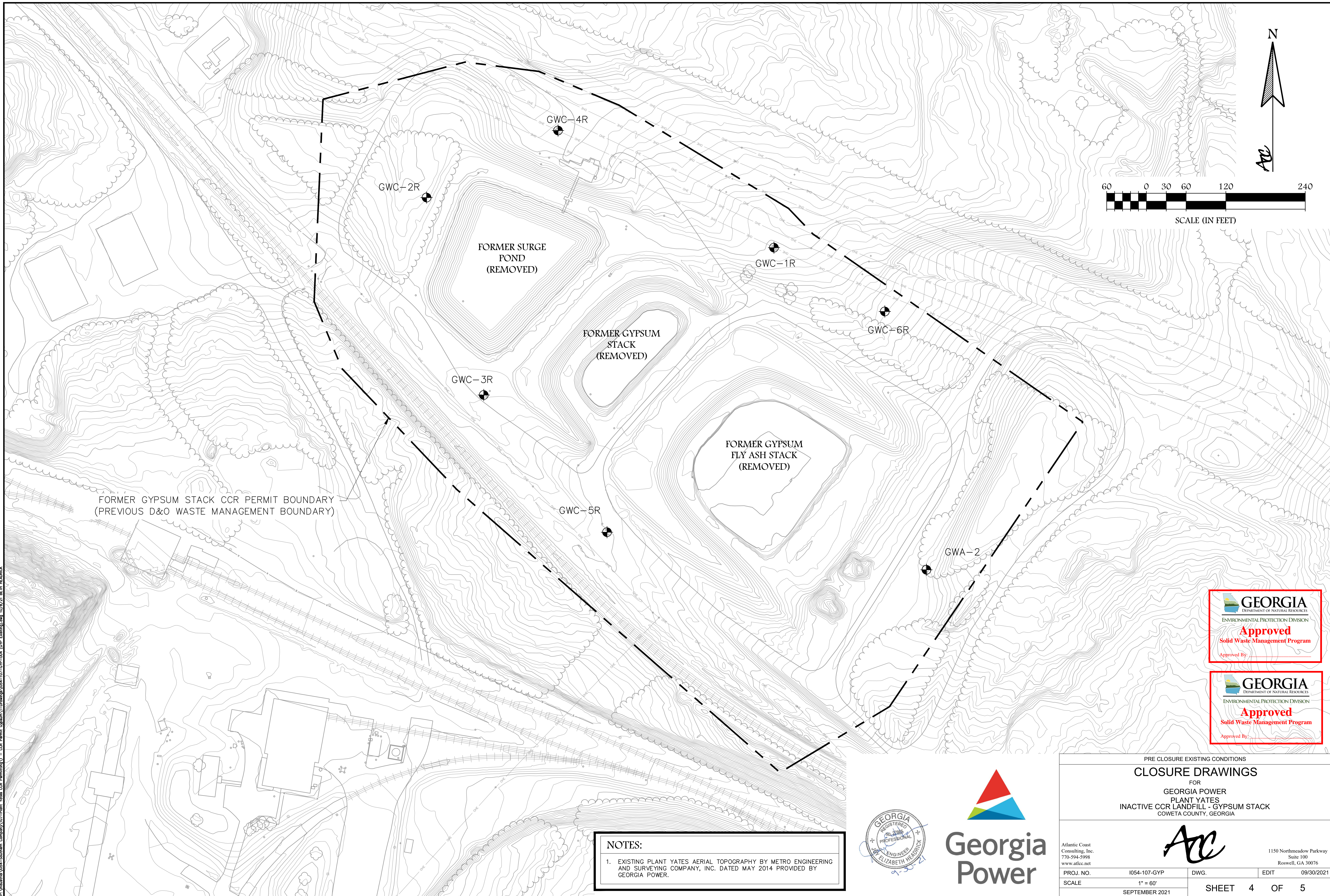
PERMIT BOUNDARY & LEGAL DESCRIPTION
CLOSURE DRAWINGS
FOR
GEORGIA POWER
PLANT YATES
INACTIVE CCR LANDFILL - GYPSUM STACK
COWETA COUNTY, GEORGIA

Atlantic Coast Consulting, Inc.
770-594-5998
www.atcc.net

1150 Northmeadow Parkway
Suite 100
Roswell, GA 30076

PROJ. NO.	I054-107-GYP	DWG.	EDIT	09/30/2021
SCALE	1" = 200'	SHEET 3 OF 5		





SCALE (IN FEET)

FORMER GYPSUM STACK CCR PERMIT BOUNDARY
(PREVIOUS D&O WASTE MANAGEMENT BOUNDARY)

FORMER SURGE
POND
(REMOVED)

FORMER GYPSUM
STACK
(REMOVED)

FORMER GYPSUM
FLY ASH STACK
(REMOVED)

NOTES:
1. EXISTING PLANT YATES AERIAL TOPOGRAPHY BY METRO ENGINEERING AND SURVEYING COMPANY, INC. DATED MAY 2014 PROVIDED BY GEORGIA POWER.



PRE CLOSURE EXISTING CONDITIONS			
CLOSURE DRAWINGS			
FOR GEORGIA POWER PLANT YATES INACTIVE CCR LANDFILL GYPSUM STACK COWETA COUNTY, GEORGIA			
		1150 Northmeadow Parkway Suite 100 Roswell, GA 30076	
PROJ. NO.	I054-107-GYP	DWG.	EDIT 09/30/2021
SCALE	1" = 60'	SHEET 4 OF 5	
SEPTEMBER 2021			

P:\Industry\054-Southern Company\107-Plant Yates CCR Permit\054-107-gyp-004 (GYP Landfill)\dwg 10/28/21 BETH HEARICK

**PLANT YATES
GYPSUM POND CLOSURE
FINAL GRADE SURVEY
COWETA COUNTY, GEORGIA
OCTOBER 2016**

CONTROL REBAR
RG-20
N1262202.20
E2072807.88
EL752.09

 CERTIFICATION POINT
 12 CERTIFICATION POINT #
 100.00 ELEVATION
 DESIGNED FINISHED GRADE



NORTH ARROW
Georgia State Plane - NAD 83 West Zone

CLOSURE FINAL GRADE SURVEY
CLOSURE DRAWINGS
FOR
GEORGIA POWER
PLANT YATES
INACTIVE CCR LANDFILL - GYPSUM STACK
COWETA COUNTY, GEORGIA

SHEET 5 OF 5

CERTIFICATION POINT TABLE

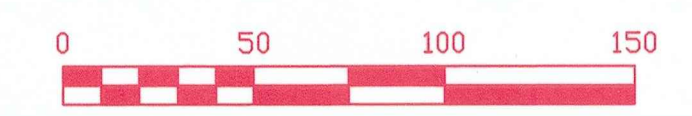
Grid Certification Point #	Northing	Easting	As Built Closure cut Elevation	As Built 6" undercut Elevation	Cut Thickness	Finished Elevation	Date Surveyed Clean cut	Date Surveyed 6" undercut	Date Finished Elevation
1	1261951.428	2072899.988	767.54	767.00	-0.54	755.77	10.06.16	10.11.16	10.21.16
2	1261899.905	2072999.985	765.06	764.56	-0.50	764.92	10.06.16	10.11.16	10.21.16
3	1261900.024	2072900.058	755.24	754.51	-0.73	755.9	10.06.16	10.11.16	10.21.16
4	1261900.080	2072800.057	764.80	764.13	-0.67	764.83	10.06.16	10.11.16	10.21.16
5	1261799.997	2072758.309	767.12	766.55	-0.57	767.46	10.06.16	10.11.16	10.21.16
6	1261800.000	2072800.000	755.28	754.72	-0.56	763.5	10.06.16	10.11.16	10.21.16
7	1261800.000	2072900.000	755.10	754.60	-0.50	758.02	10.06.16	10.11.16	10.21.16
8	1261800.000	2073000.000	764.48	763.97	-0.51	760.15	09.08.16	09.15.16	10.21.16
9	1261800.025	2073099.954	760.59	759.86	-0.73	762.64	09.08.16	09.15.16	10.21.16
10	1261799.981	2073199.944	774.13	773.09	-1.03	765.18	09.08.16	09.15.16	10.11.16
11	1261886.608	2073062.702	766.21	765.68	-0.77	765.43	09.08.16	09.15.16	10.21.16
12	1261870.341	2073099.992	766.45	765.11	-1.34	763.19	09.08.16	09.15.16	10.21.16
13	1261743.650	2073300.000	773.92	773.29	-0.63	773.14	08.26.16	09.08.16	10.11.16
14	1261700.000	2073365.366	776.86	776.26	-0.60	779.68	08.26.16	09.08.16	10.11.16
15	1261700.000	2073300.000	770.64	769.27	-1.37	775.53	08.26.16	09.08.16	10.11.16
16	1261700.000	2073200.000	771.35	770.74	-0.61	769.07	08.26.16	09.08.16	10.11.16
17	1261700.000	2073100.000	764.75	764.15	-0.60	764.49	09.08.16	09.15.16	10.11.16
18	1261700.000	2073000.000	760.81	760.17	-0.64	762.17	09.08.16	09.15.16	10.21.16
19	1261700.000	2072900.000	765.23	764.58	-0.65	761.15	09.08.16	09.15.16	10.21.16
20	1261700.012	2072850.470	767.25	766.10	-1.15	763.95	10.06.16	10.11.16	10.21.16
21	1261618.465	2072900.000	767.07	766.52	-0.55	764.93	09.08.16	09.15.16	10.21.16
22	1261599.909	2072924.570	767.66	766.36	-1.30	764.88	09.08.16	09.15.16	10.21.16
23	1261599.992	2073000.079	764.06	763.30	-0.76	764.21	09.08.16	09.15.16	10.11.16
24	1261600.000	2073100.000	773.18	771.71	-1.47	767.77	08.26.16	09.08.16	10.11.16
25	1261600.000	2073200.000	771.55	770.90	-0.65	774.27	08.26.16	09.08.16	10.11.16
26	1261600.000	2073300.000	773.96	773.23	-0.73	780.77	08.26.16	09.08.16	10.11.16
27	1261600.000	2073400.000	780.18	779.23	-0.95	787.24	08.26.16	09.08.16	10.11.16
28	1261600.000	2073500.000	790.61	789.28	-1.33	793.74	08.26.16	09.08.16	10.11.16
29	1261615.347	2073500.000	790.56	788.95	-1.61	792.93	08.26.16	09.08.16	10.11.16
30	1261558.664	2073544.340	798.22	796.96	-1.26	799.19	08.26.16	09.08.16	10.11.16
31	1261500.000	2073500.000	798.81	797.99	-0.82	798.97	08.26.16	09.08.16	10.11.16
32	1261500.000	2073400.000	784.00	783.42	-0.58	792.51	08.26.16	09.08.16	10.11.16
33	1261500.000	2073300.000	779.49	778.86	-0.63	785.95	08.26.16	09.08.16	10.11.16
34	1261500.000	2073200.000	773.28	772.54	-0.74	779.52	08.26.16	09.08.16	10.11.16
35	1261500.000	2073100.000	771.30	769.74	-1.56	773.06	08.26.16	09.08.16	10.11.16
36	1261499.997	2073031.245	774.95	774.38	-0.57	768.85	08.26.16	09.08.16	10.11.16
37	1261531.957	2072999.996	775.30	774.69	-0.61	766.87	08.26.16	09.08.16	10.11.16
38	1261426.581	2073100.000	777.40	776.82	-0.58	776.82	08.26.16	09.08.16	10.11.16
39	1261400.000	2073124.970	778.89	778.33	-0.56	779.86	08.26.16	09.08.16	10.11.16
40	1261400.000	2073200.000	777.25	776.60	-0.65	784.77	08.26.16	09.08.16	10.11.16
41	1261400.000	2073300.000	783.22	782.64	-0.58	791.25	08.26.16	09.08.16	10.11.16
42	1261400.000	2073400.000	788.99	788.99	-0.97	797.7	08.26.16	09.08.16	10.11.16
43	1261399.973	2073455.409	798.91	797.69	-1.22	801.79	08.26.16	09.08.16	10.11.16
44	1261307.608	2073400.000	798.43	797.55	-0.88	801.15	08.26.16	09.08.16	10.11.16
45	1261300.000	2073300.000	787.33	786.69	-0.64	796.46	08.26.16	09.08.16	10.11.16
46	1261300.000	2073250.494	787.86	787.24	-0.62	793.06	08.26.16	09.08.16	10.11.16
47	1261336.779	2073200.000	784.74	783.96	-0.78	788.42	08.26.16	09.08.16	10.11.16
48	1261265.294	2073300.000	792.96	792.14	-0.82	798.25	08.26.16	09.08.16	10.11.16
49	1261248.076	2073337.227	795.58	794.72	-0.86	801.31	08.26.16	09.08.16	10.11.16
50	1261676.873	2073400.000	778.85	778.02	-0.83	783.2	08.26.16	09.08.16	10.11.16
51	1261600.000	2073512.050	791.08	790.37	-0.71	794.48	08.26.16	09.08.16	10.11.16
52	1261754.750	2072800.000	767.18	766.42	-0.76	765.06	10.06.16	10.11.16	10.21.16



RONALD T. GODWIN A REGISTERED SURVEYOR IN THE STATE OF GEORGIA HEREBY CERTIFY THE MAP OR PLAT OF THE ABOVE SURVEY WAS MADE UNDER MY DIRECT SUPERVISION IN ACCORDANCE WITH THE GEORGIA ACT 1291-4-3-78 AND G.A.C 115-6-56 & 67, 4-11-80. THE ABOVE SURVEY WAS PERFORMED USING EXISTING SURVEYS.

Georgia Registered Land Surveyor No. 2696
November 1, 2016.


Approved
 Solid Waste Management Program
 Approved By: _____



RAY & GILLILAND, P.C.	
122 NORTH CALHOUN AVENUE P.O. BOX 1183 SYLACAUGA, ALABAMA 35150	TEL. NO. (256) 245-3243 FAX NO. (256) 245-3202 FILE: CLEANCRD
DRAWN BY: CMR	SCALE: 1" = 50'
SPECIAL PURPOSE SURVEY	DATE: 10/2016

RON GODWIN IS ACTING AGENT FOR FOUR CORNERS SURVEYING.

