

CLOSURE DRAWINGS

FOR

GEORGIA POWER PLANT YATES

INACTIVE CCR SURFACE IMPOUNDMENT - ASH POND 1

COWETA COUNTY, GEORGIA

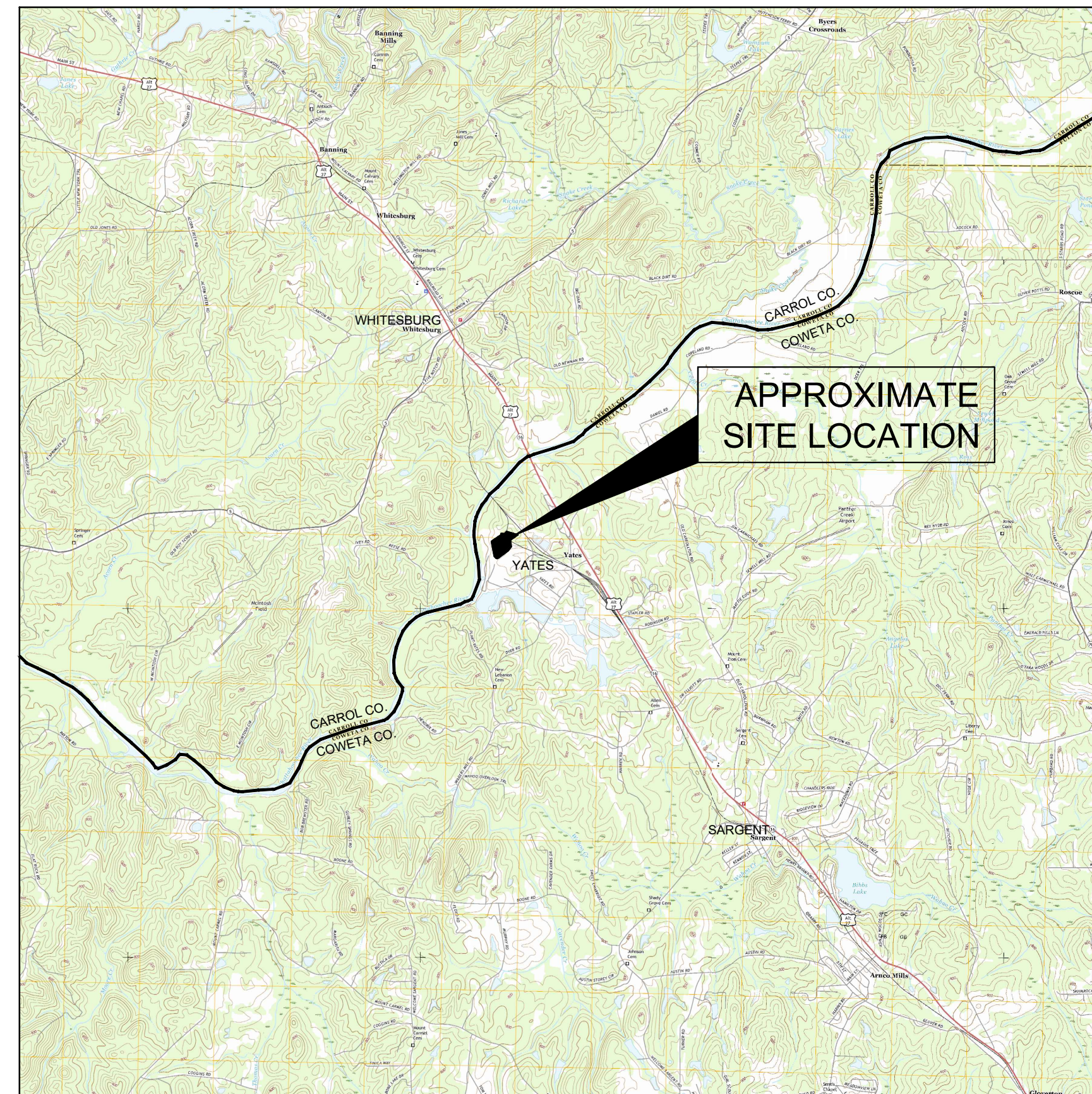
SEPTEMBER 2021

PREPARED FOR:

GEORGIA POWER COMPANY
241 RALPH MCGILL BLVD, NE
ATLANTA, GA 30308
TELEPHONE: (404) 506-6505

SITE ADDRESS

PLANT YATES
708 DYER ROAD
NEWNAN, GA30263
(770) 252-0650



PROJECT SITE LOCATION
SCALE: 1" = 1 MILE
SOURCES: USGS QUAD MAP DATED 2017 WHITESBURG, GA
USGS QUAD MAP DATED 2017 NEWNAN NORTH, GA
USGS QUAD MAP DATED 2017 HULETT, GA
USGS QUAD MAP DATED 2017 RICO, GA

Atlantic Coast Consulting, Inc.
1150 Northmeadow Pky, Suite 100, Roswell, GA 30076
770-594-5998



REVISION HISTORY

DATE	SHEETS	REQUESTED BY

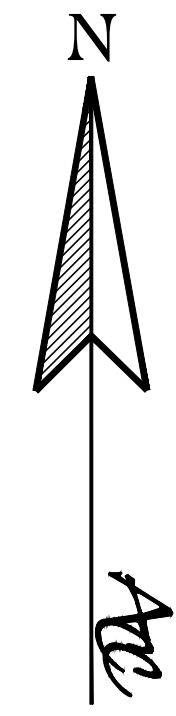
INDEX OF DRAWINGS

SHEET NO.	DESCRIPTION
1	COVER
2	PROPERTY BOUNDARY & INDEX
3	PERMIT BOUNDARY & LEGAL DESCRIPTION
4	PRE CLOSURE EXISTING CONDITIONS
5	CLOSURE FINAL GRADE SURVEY
6	PROPOSED GRADING PLAN
7	MISCELLANEOUS DETAILS





SOURCE: BING MAP 2018
SCALE: 1" = 1000'



LEGEND		
EXISTING	NEW	DESCRIPTION
		APPROXIMATE PROPERTY BOUNDARY
		CCR PERMIT BOUNDARY
		10' CONTOUR
		2' CONTOUR
		POTENTIOMETRIC CONTOUR
		PAVED ROAD
		TREELINE
		RAILROAD
		GROUNDWATER MONITORING WELL
		PIEZOMETER
		OVERHEAD POWER LINE
		POWER POLE
		TRANSMISSION LINE TOWER
		PERMANENT IDENTIFICATION MARKER

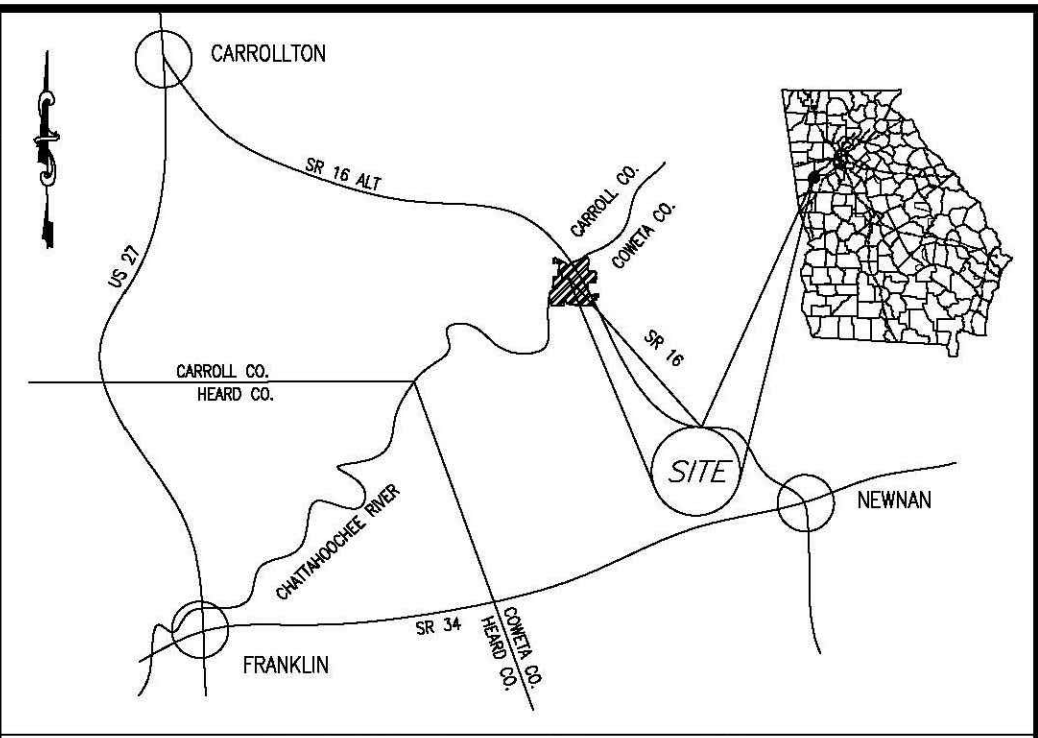
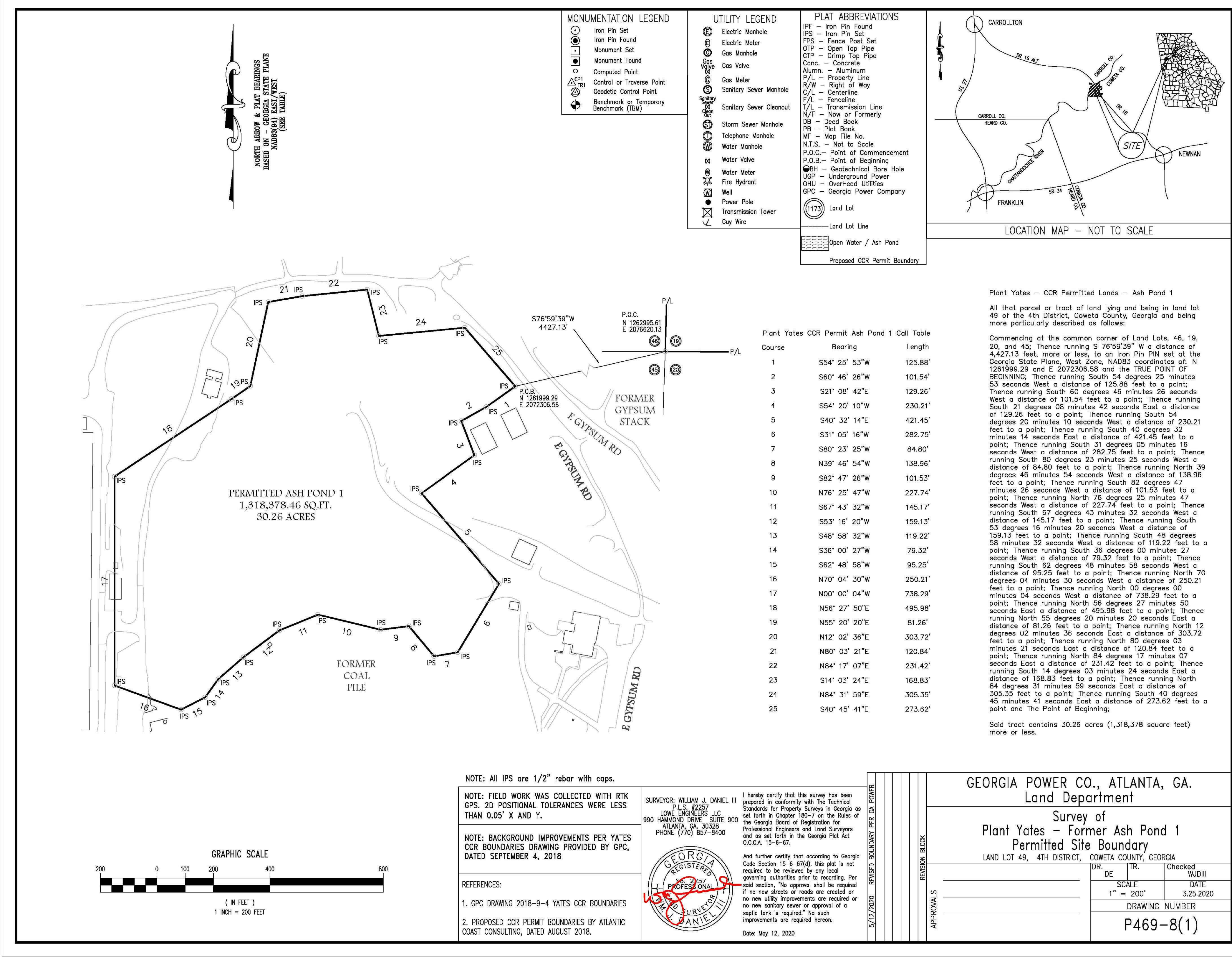
- GENERAL NOTES:**
- EXISTING PLANT YATES AERIAL TOPOGRAPHY PROVIDED BY GEORGIA POWER DATED MAY 26, 2017.
 - PROPERTY BOUNDARY SHOWN PROVIDED BY SOUTHERN COMPANY SERVICES IN ELECTRONIC FORMAT AND IS APPROXIMATE.
 - ALL DESIGN BY OTHERS. THESE PLANS ARE A REPRESENTATION OF THE PHASES TO CLOSE ASH POND 2 THROUGH REMOVAL OF CCR.

P:\Industrial\054-Southern Company\107-Plant Yates CCR Permits\107-AP1-002 (Index)\Drawings\054-107-AP1-002 (Index)\DWG 10/9/21 MATHEW TRANNELL

© 2018 MICROSOFT CORPORATION © 2018 DIGITALGLOBE © CNES (2018) DISTRIBUTION AIRBUS DS



PROPERTY BOUNDARY & INDEX			
CLOSURE DRAWINGS			
FOR GEORGIA POWER PLANT YATES INACTIVE CCR SURFACE IMPOUNDMENT - ASH POND 1 COWETA COUNTY, GEORGIA			
Atlantic Coast Consulting, Inc. 770-594-5998 www.atcc.net		1150 Northmeadow Pky Suite 100 Roswell, GA 30076	
PROJ. NO.	I054-107-AP1	DWG.	EDIT 09/30/2021
SCALE	1" = 1,000'	SHEET 2 OF 7	
SEPTEMBER 2021			



Plant Yates - CCR Permitted Lands - Ash Pond 1
All that parcel or tract of land lying and being in land lot 49 of the 4th District, Coweta County, Georgia and being more particularly described as follows:

Commencing at the common corner of Land Lots, 46, 19, 20, and 45; Thence running S 76°59'39" W a distance of 4,427.13 feet, more or less, to an iron pin PIN set at the Georgia State Plane, West Zone, NAD83 coordinates of: N 1281999.29 and E 2072306.58 and the TRUE POINT OF BEGINNING; Thence running South 54 degrees 25 minutes 53 seconds West a distance of 125.88 feet to a point; Thence running South 60 degrees 46 minutes 26 seconds West a distance of 101.54 feet to a point; Thence running South 21 degrees 08 minutes 42 seconds East a distance of 129.26 feet to a point; Thence running South 54 degrees 20 minutes 10 seconds West a distance of 230.21 feet to a point; Thence running South 40 degrees 32 minutes 14 seconds West a distance of 421.45 feet to a point; Thence running South 31 degrees 05 minutes 16 seconds West a distance of 282.75 feet to a point; Thence running South 80 degrees 23 minutes 25 seconds West a distance of 84.80 feet to a point; Thence running South 39 degrees 46 minutes 54 seconds West a distance of 138.96 feet to a point; Thence running South 82 degrees 47 minutes 26 seconds West a distance of 101.53 feet to a point; Thence running North 76 degrees 25 minutes 47 seconds West a distance of 227.74 feet to a point; Thence running South 67 degrees 43 minutes 32 seconds West a distance of 145.17 feet to a point; Thence running South 53 degrees 16 minutes 20 seconds West a distance of 159.13 feet to a point; Thence running South 48 degrees 58 minutes 32 seconds West a distance of 119.22 feet to a point; Thence running South 36 degrees 00 minutes 27 seconds West a distance of 79.32 feet to a point; Thence running South 62 degrees 48 minutes 58 seconds West a distance of 95.25 feet to a point; Thence running North 70 degrees 04 minutes 30 seconds West a distance of 250.21 feet to a point; Thence running North 00 degrees 00 minutes 04 seconds West a distance of 738.29 feet to a point; Thence running North 56 degrees 27 minutes 50 seconds East a distance of 495.98 feet to a point; Thence running North 55 degrees 20 minutes 20 seconds East a distance of 81.26 feet to a point; Thence running North 12 degrees 02 minutes 36 seconds East a distance of 303.72 feet to a point; Thence running North 80 degrees 03 minutes 21 seconds East a distance of 120.84 feet to a point; Thence running South 14 degrees 03 minutes 24 seconds East a distance of 168.83 feet to a point; Thence running North 84 degrees 31 minutes 59 seconds East a distance of 305.35 feet to a point; Thence running South 40 degrees 45 minutes 41 seconds East a distance of 273.62 feet to a point and The Point of Beginning;

Said tract contains 30.26 acres (1,318,378 square feet) more or less.

GEORGIA POWER CO., ATLANTA, GA.
Land Department

Survey of
Plant Yates - Former Ash Pond 1
Permitted Site Boundary

LAND LOT 49, 4TH DISTRICT, COWETA COUNTY, GEORGIA

DR.	TR.	Checked	WJD/III
DE	TR	SCALE	DATE
		1" = 200'	3.25.2020
DRAWING NUMBER			
P469-8(1)			



PERMIT BOUNDARY & LEGAL DESCRIPTION

CLOSURE DRAWINGS

FOR
GEORGIA POWER
PLANT YATES
INACTIVE CCR SURFACE IMPOUNDMENT - ASH POND 1
COWETA COUNTY, GEORGIA

ACC

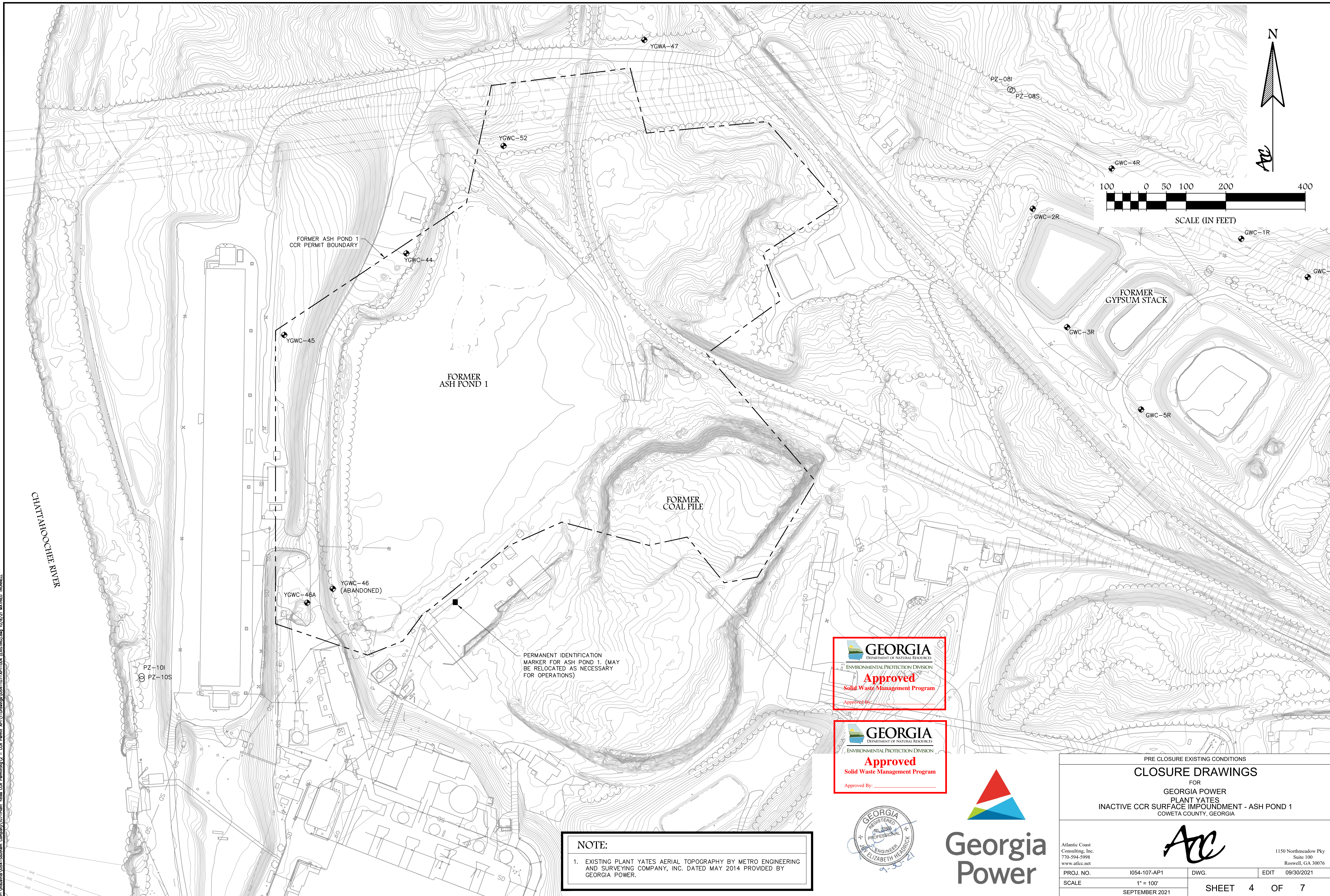
Atlantic Coast Consulting, Inc.
770-594-5998
www.atcc.net

1150 Northmeadow Pky
Suite 100
Roswell, GA 30076

PROJ. NO.	I054-107-AP1	DWG.	EDIT	09/30/2021
SCALE	1" = 200'	SHEET 3 OF 7		
SEPTEMBER 2021				




P:\Industrial\054-Southern Company\107-Plant Yates CCR Permitt\107-AP1-003 (BOUNDARY) - 10/9/21 MATHIEU TRUNNELL



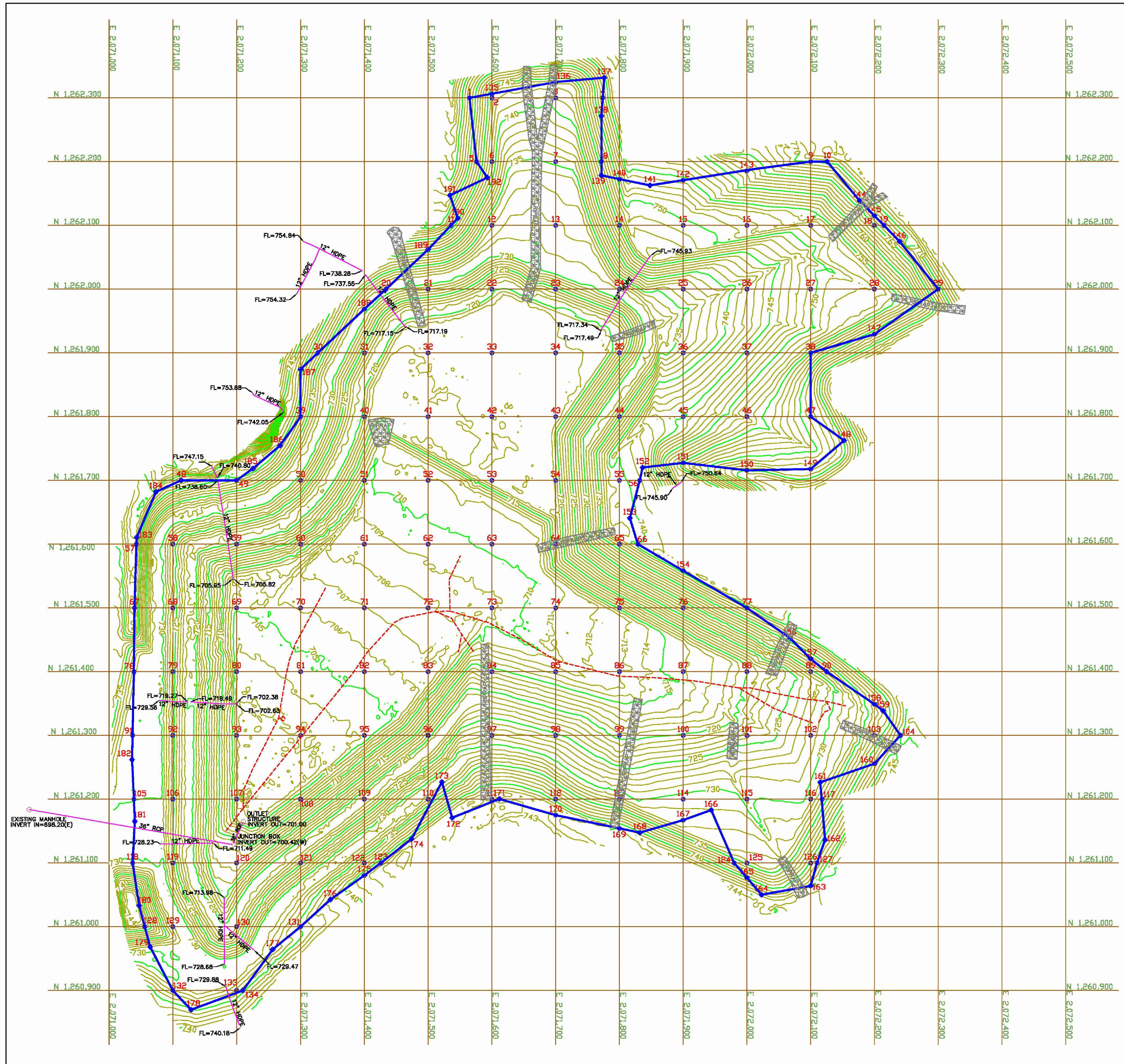
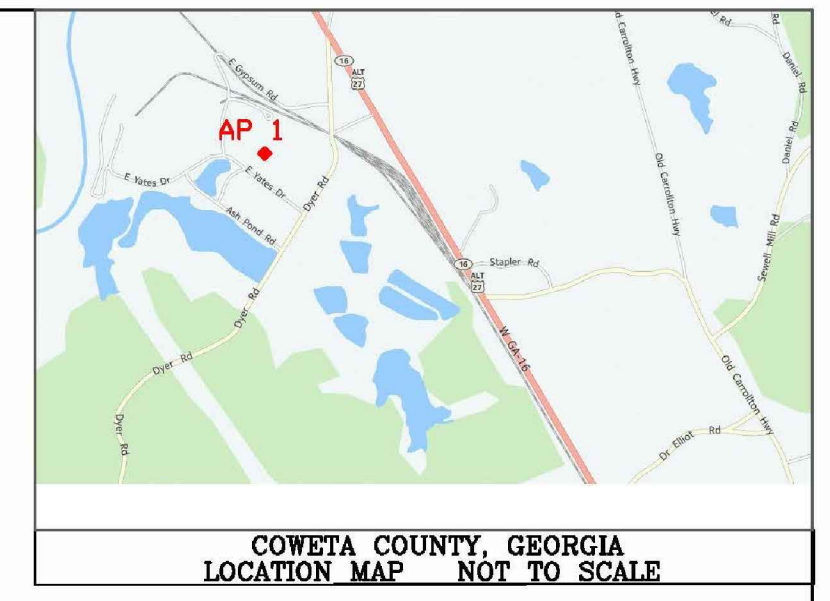
P:\Industrial\054-Southern Company\107-Point Yates CCR Permits\054-107-AP-004 (EXISTING)dwg 10/28/21 MATTHEW TRUNNELL



NOTE:
1. EXISTING PLANT YATES AERIAL TOPOGRAPHY BY METRO ENGINEERING AND SURVEYING COMPANY, INC. DATED MAY 2014 PROVIDED BY GEORGIA POWER.

PRE CLOSURE EXISTING CONDITIONS			
CLOSURE DRAWINGS			
FOR GEORGIA POWER PLANT YATES INACTIVE CCR SURFACE IMPOUNDMENT - ASH POND 1 COWETA COUNTY, GEORGIA			
		1150 Northmeadow Pky Suite 100 Roswell, GA 30076	
PROJ. NO.	I054-107-AP1	DWG.	EDIT 09/30/2021
SCALE	1" = 100'	SHEET 4 OF 7	
SEPTEMBER 2021			

PLANT YATES
ASH POND-1 CLOSURE
FINAL GRADE SURVEY
(FIGURE 3)
COWETA COUNTY, GEORGIA
APRIL 2018

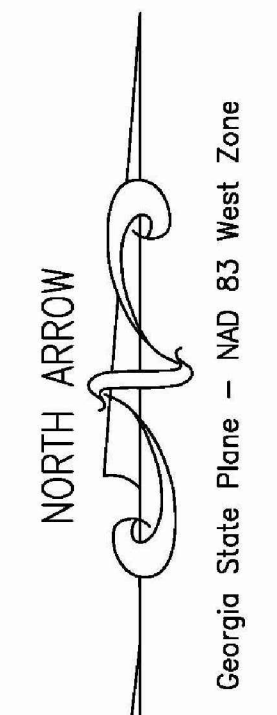


- NOTE:
1) All Coordinates are Georgia State Plane - West Zone NAD 83.
2) All elevations shown are NAVD 88.
3) Contours from Digital Terrain Model of field surveyed data collected April 2, 2018.
4) Equipment used is Topcon Hyper Life Plus GPS
5) This plat has been calculated for closure and was found to be accurate within one foot in 100,000 feet.
6) Field Survey by Ray & Gilliland, P.C.
122 North Calhoun Avenue
P.O. Box 1183
Sylacauga, Alabama 35150
Tel. No. (256) 245-3243

I RONALD T. COWDIN A REGISTERED SURVEYOR IN THE STATE OF GEORGIA HEREBY CERTIFY THE MAP OR PLAN OF THE ABOVE SURVEY WAS MADE UNDER MY DIRECT SUPERVISION IN ACCORDANCE WITH THE GEORGIA ACT 1291-4-3-78 AND G.A.C. 115-6-56 & 11-80. THE ABOVE SURVEY WAS PERFORMED USING EXISTING SURVEYS.

RONALD T. COWDIN
Georgia Registered Land Surveyor No. 2696

April 4, 2018

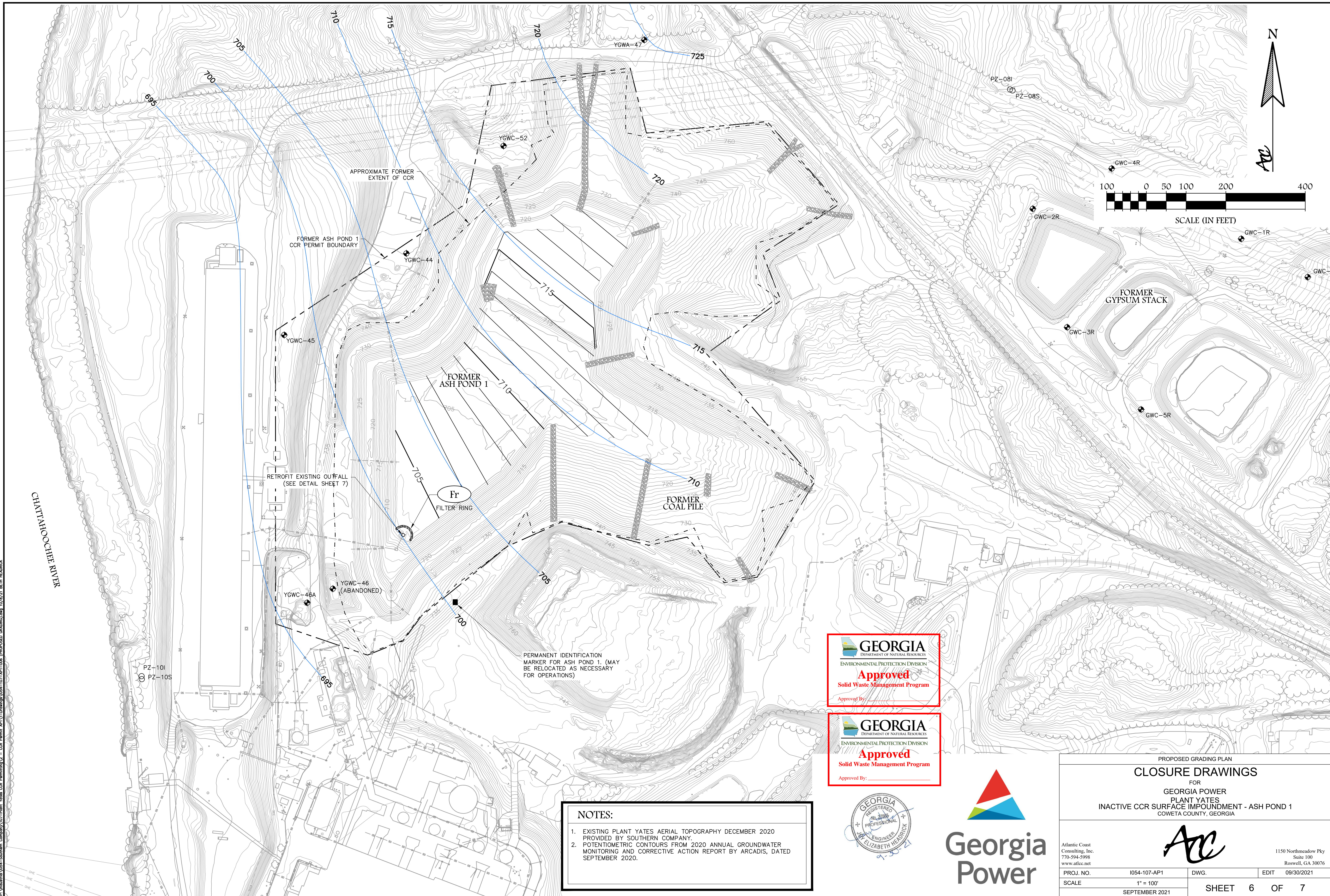


RAY & GILLILAND, P.C.
122 NORTH CALHOUN AVENUE
P.O. BOX 1183
SYLACAUGA, ALABAMA 35150
DRAWN BY: CMR
CLOSURE SURVEY

TEL. NO. (256) 245-3243
FAX NO. (256) 245-3202
FILE: API CERT POINTS.CRD
SCALE: 1" = 100'
DATE: 04/2018

- CERTIFICATION POINT
- CERTIFICATION POINT #
- FINISHED ELEVATION
- FL = FLOW LINE
- ASH POND 1 BOUNDARY
- UNDER DRAIN
- RIP RAP
- MINOR CONTOUR
- MAJOR CONTOUR

Grid Certification Point #	Northing	Easting	As Built Closure Elevation	As Built Closure Cut	As Built Undercut	Cut Thickness (ft.)	Finished Elevation	Date Surveyed Closure Cut	Date Surveyed Undercut	Date Finished Elevation
1	1262300	2071565	742.24	741.12	-1.12	752.50	06.02.17	06.02.17	03.16.18	
2	1262300	2071600	721.94	721.01	-0.93	743.51	06.02.17	06.02.17	03.16.18	
3	1262300	2071700	741.46	740.71	-0.75	741.51	06.02.17	06.02.17	03.16.18	
4	1262300	2071737	742.30	741.51	-0.79	753.41	06.02.17	06.02.17	03.16.18	
5	1262300	2071576	737.62	736.96	-0.66	748.51	06.02.17	06.02.17	03.16.18	
6	1262200	2071800	735.74	735.16	-0.58	742.55	06.02.17	06.02.17	03.16.18	
7	1262200	2072000	734.40	733.85	-0.55	735.42	06.02.17	06.02.17	03.16.18	
8	1262200	2071771	736.37	735.65	-0.72	746.11	06.02.17	06.02.17	03.16.18	
9	1262200	2072100	769.02	768.39	-0.63	770.12	06.02.17	06.02.17	03.16.18	
10	1262200	2072126	770.41	769.75	-0.66	770.62	06.02.17	06.02.17	03.16.18	
11	1262100	2071536	735.42	734.44	-0.98	746.02	05.31.17	06.02.17	03.16.18	
12	1262100	2071600	728.35	727.68	-0.67	732.89	05.31.17	06.02.17	03.16.18	
13	1262100	2071700	731.67	730.45	-1.21	731.75	05.31.17	06.02.17	03.16.18	
14	1262100	2071800	748.74	745.17	-3.57	744.82	07.06.17	07.10.17	03.16.18	
15	1262100	2071900	748.54	747.65	-0.89	749.42	06.02.17	06.09.17	03.16.18	
16	1262100	2072000	751.94	750.59	-1.35	751.58	06.02.17	06.09.17	03.16.18	
17	1262100	2072100	754.27	752.82	-1.45	752.33	06.02.17	06.09.17	03.16.18	
18	1262100	2072200	767.10	766.45	-0.65	766.65	06.02.17	06.09.17	03.16.18	
19	1262100	2072216	769.25	768.60	-0.65	767.18	06.02.17	06.09.17	03.16.18	
20	1262000	2071434	732.90	732.10	-0.80	730.61	05.31.17	06.02.17	03.16.18	
21	1262000	2071500	731.66	730.88	-0.78	729.98	05.31.07	06.02.17	03.16.18	
22	1262000	2071600	724.00	722.94	-1.06	720.31	05.31.17	06.02.17	03.16.18	
23	1262000	2071700	730.03	727.88	-2.15	724.14	07.06.17	07.10.17	03.16.18	
24	1262000	2071800	734.46	733.24	-1.22	730.96	07.06.17	07.10.17	03.16.18	
25	1262000	2071900	736.34	735.51	-0.83	736.58	06.19.17	06.27.17	03.16.18	
26	1262000	2072000	739.90	737.95	-1.95	741.72	06.19.17	06.27.17	03.16.18	
27	1262000	2072100	743.72	742.99	-0.73	749.29	06.19.17	06.27.17	03.16.18	
28	1262000	2072200	763.57	762.82	-0.75	752.22	06.19.17	06.27.17	03.16.18	
29	1262000	2072300	771.18	770.30	-0.88	769.12	06.19.17	06.27.17	03.16.18	
30	1261900	2071377	735.45	734.70	-0.76	737.18	06.02.17	06.09.17	03.16.18	
31	1261900	2071400	719.79	718.98	-0.81	723.56	06.02.17	06.09.17	03.16.18	
32	1261900	2071500	716.64	716.04	-0.60	717.02	05.31.17	06.02.17	03.16.18	
33	1261900	2071600	721.60	719.81	-1.79	719.54	07.14.17	07.17.17	03.16.18	
34	1261900	2071700	725.26	723.38	-1.88	717.75	07.06.17	07.10.17	03.16.18	
35	1261900	2071800	731.01	729.84	-1.17	721.96	07.06.17	07.10.17	03.16.18	
36	1261900	2071900	740.19	739.37	-0.82	736.39	06.19.17	06.27.17	03.16.18	
37	1261900	2072000	752.89	751.89	-1.00	745.18	06.19.17	06.27.17	03.16.18	
38	1261900	2072100	755.89	755.05	-0.84	755.50	06.19.17	06.27.17	03.16.18	
39	1261800	2071300	741.37	740.63	-0.74	737.48	06.02.17	06.09.17	03.16.18	
40	1261800	2071400	727.28	724.09	-3.19	718.51	06.02.17	06.09.17	03.16.18	
41	1261800	2071500	717.14	716.17	-0.97	717.03	07.14.17	07.17.17	03.16.18	
42	1261800	2071600	720.07	718.01	-2.06	717.02	07.14.17	07.17.17	03.16.18	
43	1261800	2071700	721.60	720.36	-1.24	717.82	07.14.17	07.17.17	03.16.18	
44	1261800	2071800	736.77	735.37	-1.40	733.92	07.06.17	07.10.17	03.16.18	
45	1261800	2071900	756.82	756.32	-0.50	744.88	06.02.17	06.09.17	03.16.18	
46	1261800	2072000	756.20	755.65	-0.55	752.89	06.02.17	06.09.17	03.16.18	
47	1261800	2072100	760.62	760.01	-0.61	761.41	06.19.17	06.27.17	03.16.18	
48	1261700	2071100	721.60	719.81	-1.79	719.54	07.14.17	07.17.17	03.16.18	
49	1261700	2071200	727.54	725.75	-1.79	716.07	06.02.17	06.09.17	03.16.18	
50	1261700	2071300	727.72	726.02	-1.70	726.11	06.02.17	06.09.17	03.16.18	
51	1261700	2071400	710.56	710.04	-0.52	710.02	06.02.17	06.09.17	03.16.18	
52	1261700	2071500	712.79	712.18	-0.61	710.90	07.14.17	07.17.17	03.16.18	
53	1261700	2071600	712.31	710.16	-2.15	712.22	07.14.17	07.17.17	03.16.18	
54	1261700	2071700	724.02	722.91	-1.11	717.82	07.14.17	07.17.17	03.16.18	
55	1261700	2071800	739.42	738.43	-0.99	739.04	07.14.17	07.17.17	03.16.18	
56	1261700	2071832	741.10	740.52	-0.58	740.20	07.21.17	07.25.17	03.16.18	
57	1261600	2071043	744.04	742.99	-1.05	743.61	08.24.17	08.28.17	03.16.18	
58	1261600	2071100	724.64	724.11	-0.53	725.89	08.02.17	08.09.17	03.16.18	
59	1261600	2071200	727.81	727.27	-0.54	719.00	08.02.17	08.09.17	03.16.18	
60	1261600	2071300	724.33	723.77	-0.56	711.81	06.02.17	06.09.17	03.16.18	
61	1261600	2071400	705.23	704.27	-0.96	708.41	08.21.17	08.24.17	03.16.18	
62	1261600	2071500	711.02	710.05	-0.97	709.35	08.21.17	08.24.17	03.16.18	
63	1261600	2071600	709.91	708.85	-1.06	710.20	07.14.17	07.17.17	03.16.18	
64	1261600	2071700	726.33	725.75	-0.58	716.07	07.21.17	07.25.17	03.16.18	
65	1261600	2071800	736.27	735.76	-0.51	736.01	07.21.17	07.25.17	03.16.18	
66	1261600	2071829	738.85	738.15	-0.71	739.12	07.21.17	07.25.17	03.16.18	
67	1261500	2071040	743.20	741.80	-1.40	742.92	08.02.17	08.09.17	03.16.18	
68	1261500	2071100	722.22	718.33	-3.89	725.95	08.02.17	08.09.17	03.16.18	
69	1261500	2071200	710.44	709.08	-1.36	704.91	08.21.17	08.24.17	03.16.18	
70	1261500	2071300	697.53	697.01	-0.52	706.10	08.21.17	08.24.17	03.16.18	
71	1261500	2071400	704.66	703.36	-1.30	706.90	08.21.17	08.24.17	03.16.18	
72	1261500	2071500	701.33	700.79	-0.54	707.80	08.24.17	08.28.17	03.16.18	
73	1261500	2071600	707.06	706.55	-0.51	708.82	07.21.17	07.25.17	03.16.18	
74	1261500	2071700	716.70	716.14	-0.56	710.96	07.21.17	07.25.17	03.16.18	
75	1261500	2071800	725.71	725.16	-0.55	714.92	07.21.17	07.25.17	03.16.18	
76	1261500	2071900	731.69	731.11	-0.58	727.02	07.21.17	07.25.17	03.16.18	
77	1261500	2072000	738.75	737.93	-0.82	738.91	07.21.17	07.25.17	03.16.18	
78	1261400	2071000	741.63	740.93	-0.70	731.70	08.02.17	08.09.17	03.16.18	
79	1261400	2071100	711.17	710.61	-0.56	725.75	08.02.17	08.09.17	03.16.18	
80	1261400	2071200	694.23	693.80	-0.43	703.48	08.02.17	08.09.17	03.16.18	
81	1261400	2071300	693.83	693.22	-0.61	704.48	08.21.17	08.24.17	03.16.18	
82	1261400	2071400	696.65	696.12	-0.54	705.51	08.24.17	08.28.17	03.16.18	
83	1261400	2071500	705.54	705.00	-0.54	706.72	08.24.17	08.28.17	03.16.18	
84	1261400	2071600	712.54	711.65	-0.89	715.21	08.24.17	08.28.17	03.16.18	
85	1261400	2071700	707.03	706.50	-0.53	712.61	08.01.17	08.11.17	03.16.18	
86	1261400	2071800	709.92	709.40	-0.52	712.92	08.01.17	08.11.17	03.16.18	
87	1261400	2071900	712.01	711.45	-0.56	715.82	08.01.17	08.11.17	03.16.18	
88	1261400	2072000	721.07	719.48	-1.59	720.01	07.21.17	07.25.17	03.16.18	
89	1261400	2072100	730.79	730.21	-0.58	729.03	07.06.17	07.06.17	03.16.18	
90	1261400	2072125	734.56	733.60	-0.96	732.41	07.06.17	07.06.17	03.16.18	
91	1261300	2071037	743.20	742.10	-1.10	730.04	08.02.17	08.09.17	03.16.18	
92	1261300	2071100	720.86	719.58	-1.28	725.66	08.02.17	08.09.17	03.16.18	
93	1261300	2071200	691.75	691.01	-0.74	703.12	08.12.17	08.12.17	03.16.18	
94	1261300	2071300	694.29	693.74	-0.55	703.10	08.21.17	08.24.17	03.16.18	
95	1261300	2071400	713.53	712.93	-0.60	714.51	08.02.17	08.09.17	03.16.18	
96	1261300	2071500	724.91	724.31	-0.60	725.91				



APPROXIMATE FORMER EXTENT OF CCR
 FORMER ASH POND 1
 CCR PERMIT BOUNDARY

FORMER ASH POND 1

Fr
 FILTER RING

FORMER COAL PILE

FORMER GYPSUM STACK

RETROFIT EXISTING OUTFALL
 (SEE DETAIL SHEET 7)


PERMANENT IDENTIFICATION
 MARKER FOR ASH POND 1. (MAY
 BE RELOCATED AS NECESSARY
 FOR OPERATIONS)

GEORGIA
 DEPARTMENT OF NATURAL RESOURCES
 ENVIRONMENTAL PROTECTION DIVISION
Approved
 Solid Waste Management Program
 Approved By: _____

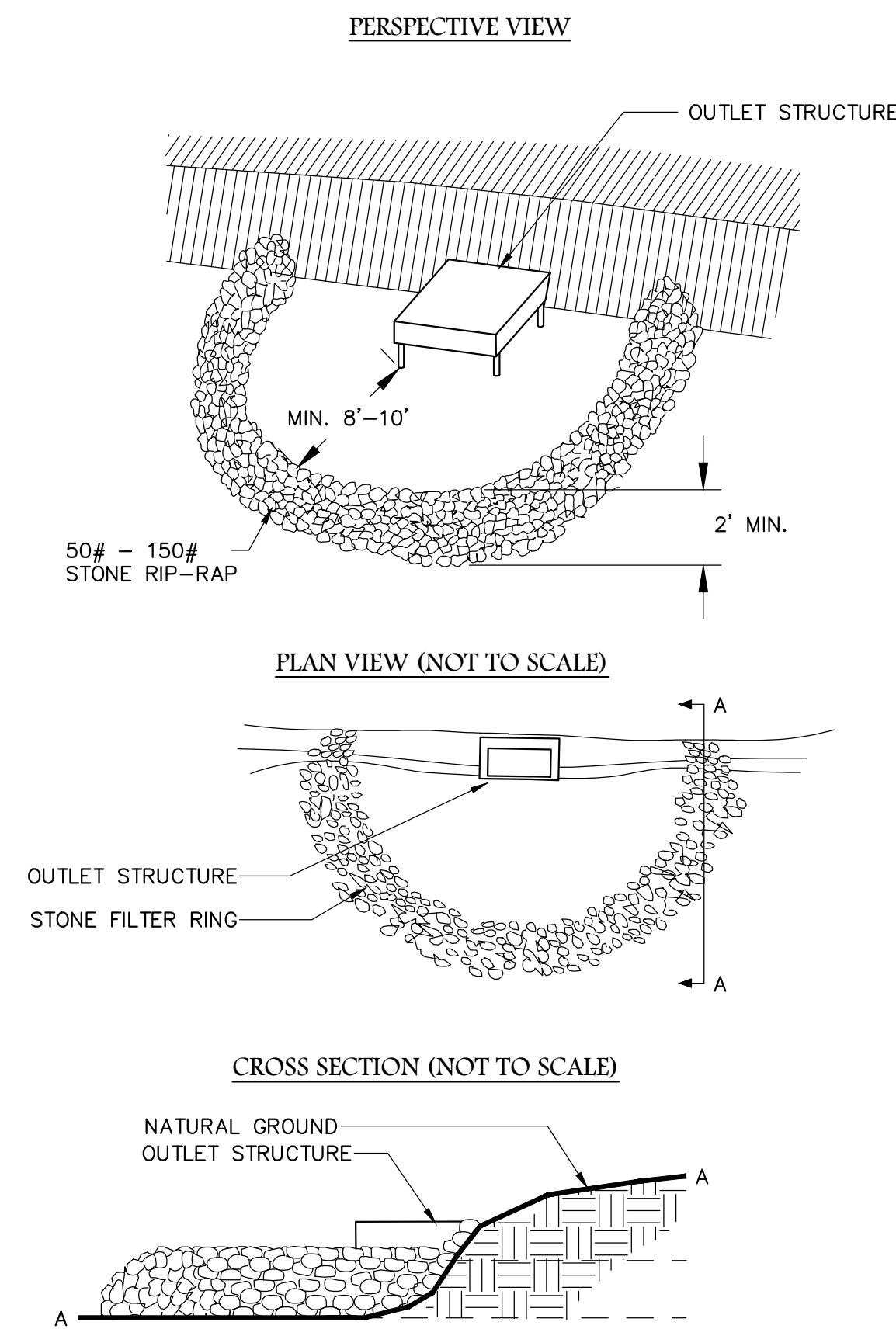
GEORGIA
 DEPARTMENT OF NATURAL RESOURCES
 ENVIRONMENTAL PROTECTION DIVISION
Approved
 Solid Waste Management Program
 Approved By: _____



- NOTES:**
- EXISTING PLANT YATES AERIAL TOPOGRAPHY DECEMBER 2020 PROVIDED BY SOUTHERN COMPANY.
 - POTENTIOMETRIC CONTOURS FROM 2020 ANNUAL GROUNDWATER MONITORING AND CORRECTIVE ACTION REPORT BY ARCADIS, DATED SEPTEMBER 2020.

PROPOSED GRADING PLAN			
CLOSURE DRAWINGS			
FOR GEORGIA POWER PLANT YATES INACTIVE CCR SURFACE IMPOUNDMENT - ASH POND 1 COWETA COUNTY, GEORGIA			
 Atlantic Coast Consulting, Inc. 770-594-5998 www.atcc.net		1150 Northmeadow Pky Suite 100 Roswell, GA 30076	
		PROJ. NO.	I054-107-AP1
SCALE	1" = 100'	09/30/2021	
SEPTEMBER 2021		SHEET	6 OF 7

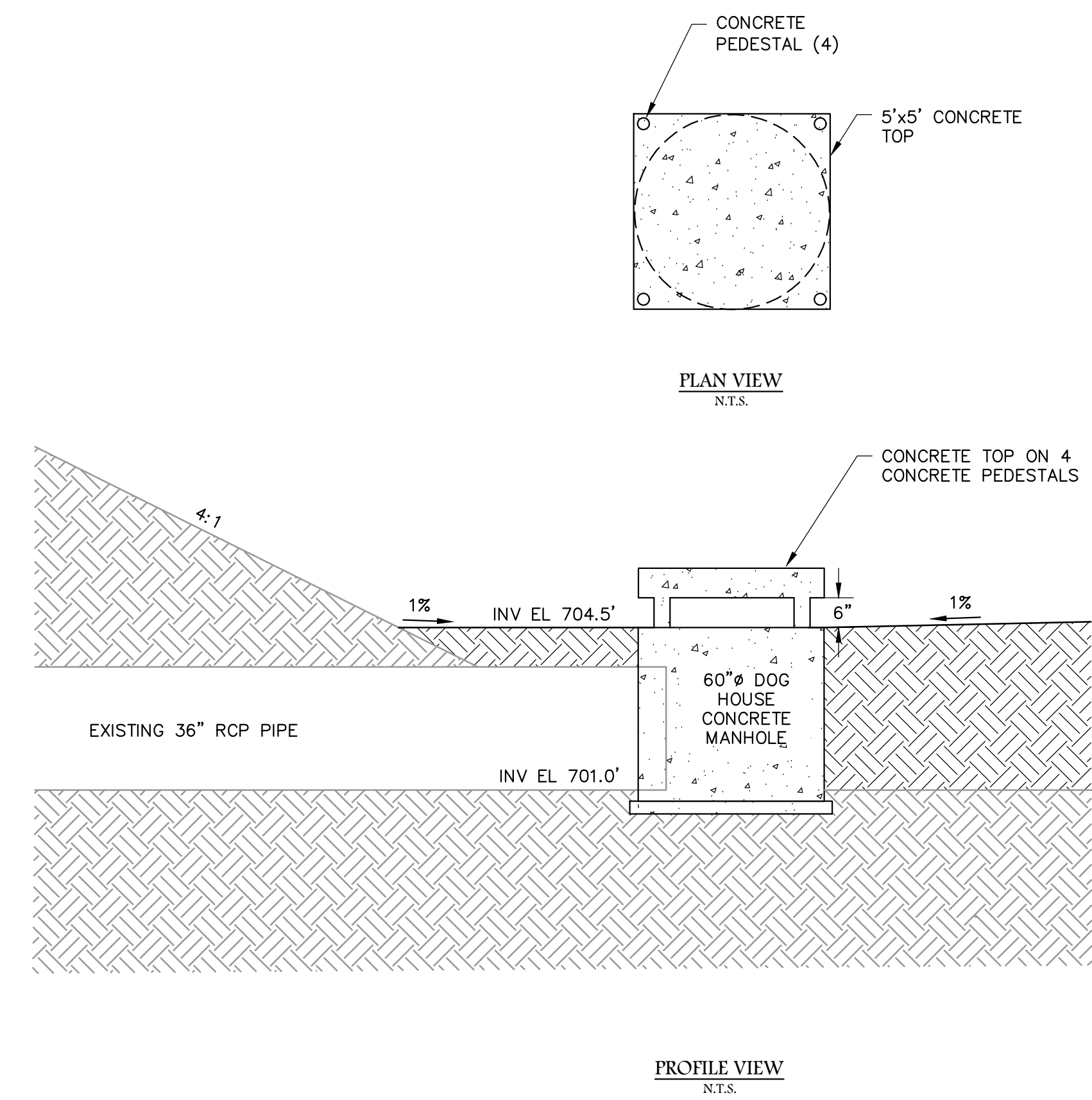
P:\Industrial\054-Southern Company\107-Plant Yates CCR Permits\107-AP1-006 (PROPOSED GRADING).dwg 10/27/21 BETH HEPPRICK



STONE FILTER RING

N.T.S.

Fr



OUTFALL STRUCTURE RETROFIT

N.T.S.

P:\Industrial\054-Southern Company\107-Plant Yates CCR Permitting\2 - CCR Permit AP1\Drawings\054-107-AP1-007 (054)054.dwg 10/9/21 MATHIEU TRUNNELL



MISCELLANEOUS DETAILS			
CLOSURE DRAWINGS			
FOR GEORGIA POWER PLANT YATES INACTIVE CCR SURFACE IMPOUNDMENT - ASH POND 1 COWETA COUNTY, GEORGIA			
Atlantic Coast Consulting, Inc. 770-594-5998 www.atcc.net		1150 Northmeadow Pky Suite 100 Roswell, GA 30076	
PROJ. NO.	I054-107-AP1	DWG.	EDIT 09/30/2021
SCALE	SEPTEMBER 2021	SHEET 7 OF 7	